

Saturn Series

Secure Smart Entrance Control with Vibrant Hues



 **ZKBio CVAccess**

 **ZKBio CVSecurity**



Pearl White(PWH)



Space Gray(SGY)



Carbon Black(CBK)



Bay Blue(BBLE)



Mist Brown(MBW)

Introduction

Unveiling the ZKTeco Saturn Series, an innovative swing barrier turnstile designed for an paralleled passage experience. With its sophisticated design, the Saturn Series has two models (S1000 and S1200) and is available in range of striking colors including Pearl White, Space Gray, and Bay Blue, Mist Brown and Carbon Black, making it blends seamlessly with both indoor and outdoor applications.

The Saturn Series chassis is made from cold-rolled SPCC steel (GB700). It achieves IPX4 protection rating, ensuring exceptional resistance to water and dust. The authentication area is enhanced with 2.5D tempered glass for scratch resistance.

Available in single or dual swing configurations, Saturn Series supports facial authentication, QR codes and RFID card authentication. Additionally, it features four pairs of infrared sensors for dual pinch protection, enhancing safety with locked positions and automatic swing barrier opening during emergencies.



Modular Design and Lid Options / Authentication Methods

- RFID Authentication
- Facial Authentication(Surface Mount)
- QR Code



2.5D Tempered Glass

The top part of the gate is made of polycarbonate and the identification area is embedded with 2.5D tempered glass, which is scratch and wear resistant, secure anti-tamper design and clear visual.



Multi-perspective LED Visual Indicator

Equipped with visually striking indicator lights(green/red/blue), providing an outstanding interactive experience for users.



Classic Rounded Arc Design

Prevents bumps and scratches, creating an ultimate comfortable passage experience.



Suspended Base Design

Adaptable installation on diverse floor surfaces. With floating beam structure.

Key Features

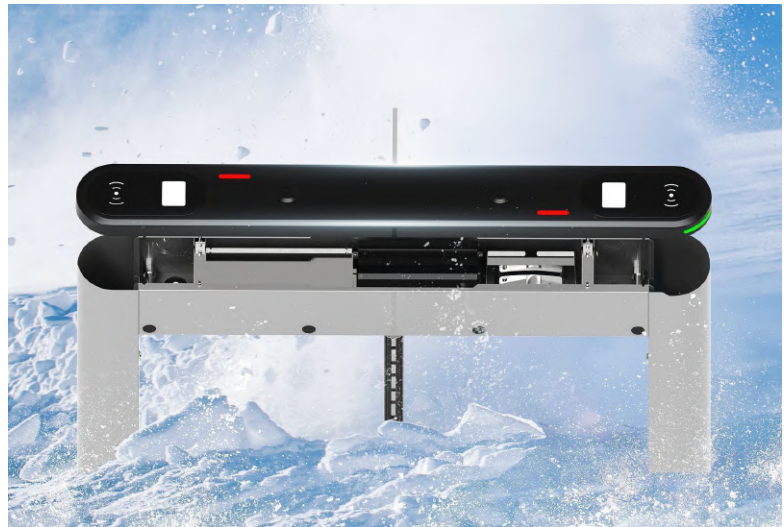
Innovative Aesthetics

The Saturn Series is available in an array of contemporary colors, including Pearl White, Space Gray, Bay Blue, Mist Brown and Carbon black.



Durability

The lid is made using an integrated molding process, achieves an IPX4 protection rating, offering robust defense against water and dust. The product is designed to thrive in extreme conditions, maintaining functionality after an 8-hour period in sub-zero temperatures as low as -30°C .



Material Innovation

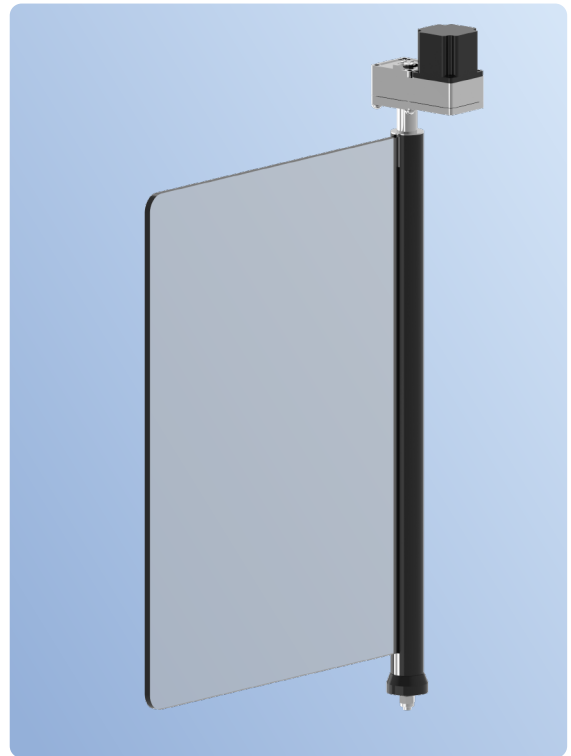
The outer surface is treated with electrostatic spraying, which ensures excellent adhesion and prevents paint from dripping. This treatment also aids in thermal regulation, preventing surface burns due to high temperatures. The identification area is elegantly embedded with 2.5D tempered glass, which is resistant to scratches and wear, enhancing the clarity of the identification process.



DC Brushless Motor

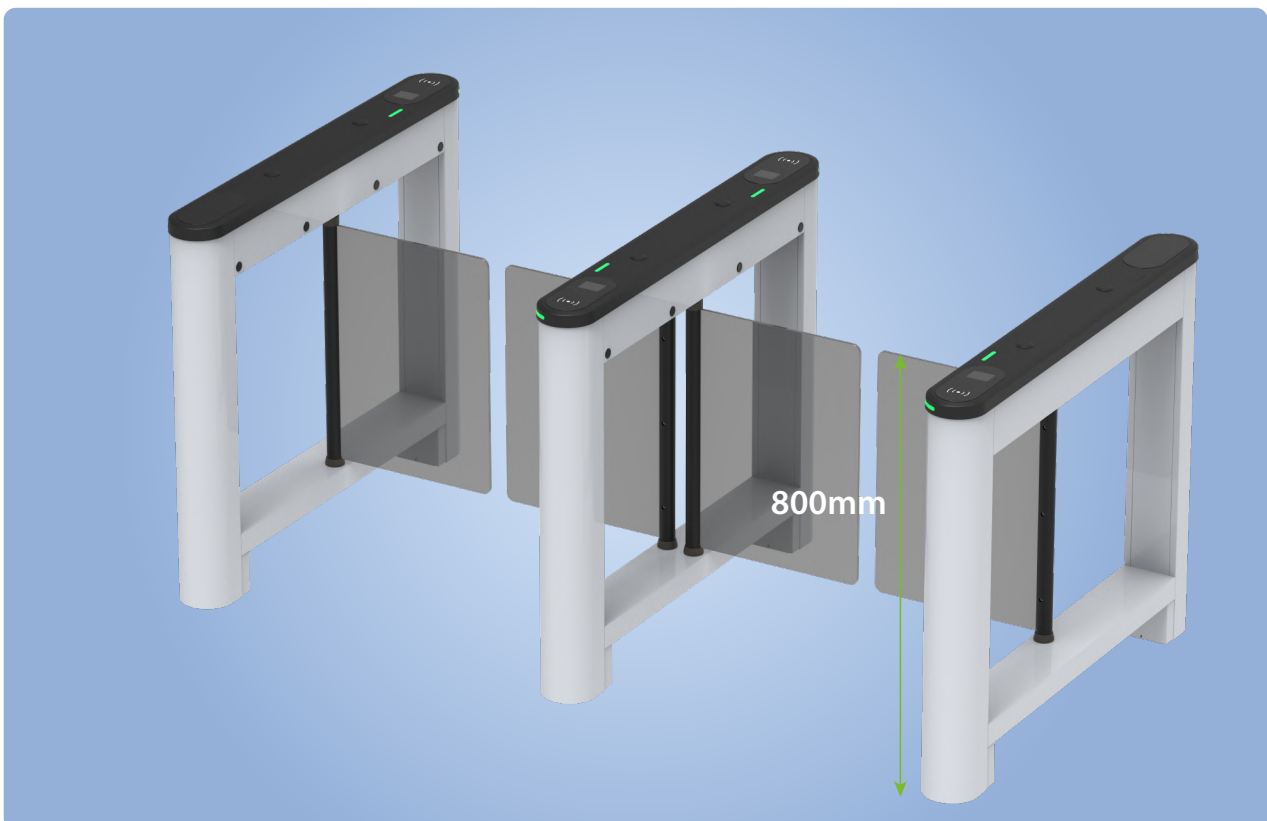
The Saturn Series uses DC brushless motors, which are stable and reliable, and the movement life reaches 3 million MCBF.

The barrier material is made of acrylic and the default lane width is 650mm, an optional 900mm lane width is also available. The modular design offers greater convenience when it comes to replacement and maintenance, while also delivering cost savings.



Safety and Security

Safety features include a swing arm with the upper edge is more than 800mm from the ground and the lower edge is less than 200mm, allowing normal operation even when submerged in water up to 0.8m, effectively preventing unauthorized crossings. Additionally, the Saturn Series is fortified with 4 pairs of infrared sensors for double anti-crushing protection and a leakage protection switch to protect against electrical hazards.



Specifications

Model	Saturn-S1000	Saturn-S1200
Audio Indicator	Internal speaker	
Visual Indicator	Top LED indicator: Blue=Door closed /stand by Green=Door opening Red=Door closing/alarm	Slide LED indicator: Green=Lane available Red=Lane unavailable
Display	NA	
Lane Type	Single lane	Dual Swing(for additional lane)
Lane Width	650mm (Standard) 900mm (Optional)	
Barrier Movement Type	Swing	
Motor	DC brushless motor	
Movement Speed	Average 1s per movement (Adjustable open/close timing)	
Movement Accuracy	NA	
Clutch	NA	
Lid Material	Polycarbonate+2.5D tempered glass	
Lid Options Authentication Methods	Streamlined under mount options: QR Code / RFID Surface mount option: Facial Authentication	
Chassis Material	Cold-rolled SPCC Steel (GB700) / Polycarbonate (Side Lid)	
Chassis Colour	Pearl White(PWH), Space Gray(SGY), Carbon Black(CBK), Bay Blue(BBLE), Mist Brown(MBW)	
Barrier Material	Clear acrylic (635*300mm)(standard) / Tempered glass (635*425mm)(optional)	
IR Sensors	4 pairs	
Motherboard Function	System configuration, access control	
Motherboard Communication	Fire alarm port (relay)*1, RS485 port*1,	
Controller	Not equipped, allowing optional from C3/ InBio Series series or customization.	
Credential Options	Under mount RFID reader: (support model: Pro ID Series, KR Series) Under mount fingerprint reader: FR1200/FR1500S	
Flow Rate	Facial Authentication: 15 passengers per minute QR Code: 30 passengers per minute RFID: 35 passengers per minute	
Accessibility	Adult, children(with care), Disability(with care)	
Power Supply	110V / 220V ±10% AC @50Hz/60Hz	
Power Rating	10VA(Standby) 40VA(Operation)	
Fire Signal	Input for voltage free contact	
Noise Level	Less than 60dB	
MTTR	Less than 60 minutes	
MCBF	3 million	
Weight	50kg	30kg

Dimension (L*W*H)	1200 * 150 * 1020 mm	
Dimensions With Packing(L*W*H)	Carton(standard): 1265*220*1070 mm(2 boxes) Wooden box(optional): 1300*480*1224mm(1 box)	Carton(standard): 1265*220*1070mm(1 box) Wooden box(optional): 1300*260*1224mm(1 box)
Operating Temperature	-30 °C to 70 °C	
Operating Humidity	5% to 90% RH (Non-condensing)	
Certifications	CE, FCC	
Ingress Protection Rating	IPX4	
Supported Software	ZKBio CVAccess / ZKBio CVSecurity (Depends on equipped access controller)	
Safety Features	Voltage free contact input for fire alarm fail state automatic swing barrier open during power off	
Security Features	Anti-tailgating, anti-pinch	
Product Delivery	Pre-assembled	
Application Environment	Indoor / outdoor (if sheltered)	
Site Preparation	Flat & level finished floor (base plate in options for unfinished floor)	
Security Level	Low	
Emergency Mode	Support (swing barrier open automatically)	
Packing Material	Carton(standard) / Wooden(optional)	

Color Options

Pearl White(PWH)

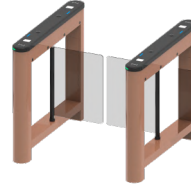
Space Gray(SGY)

Carbon Black(CBK)

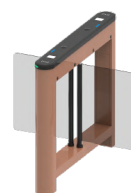
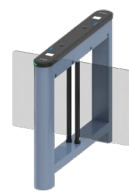
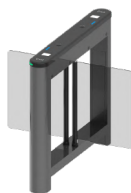
Bay Blue(BBLE)

Mist Brown(MBW)

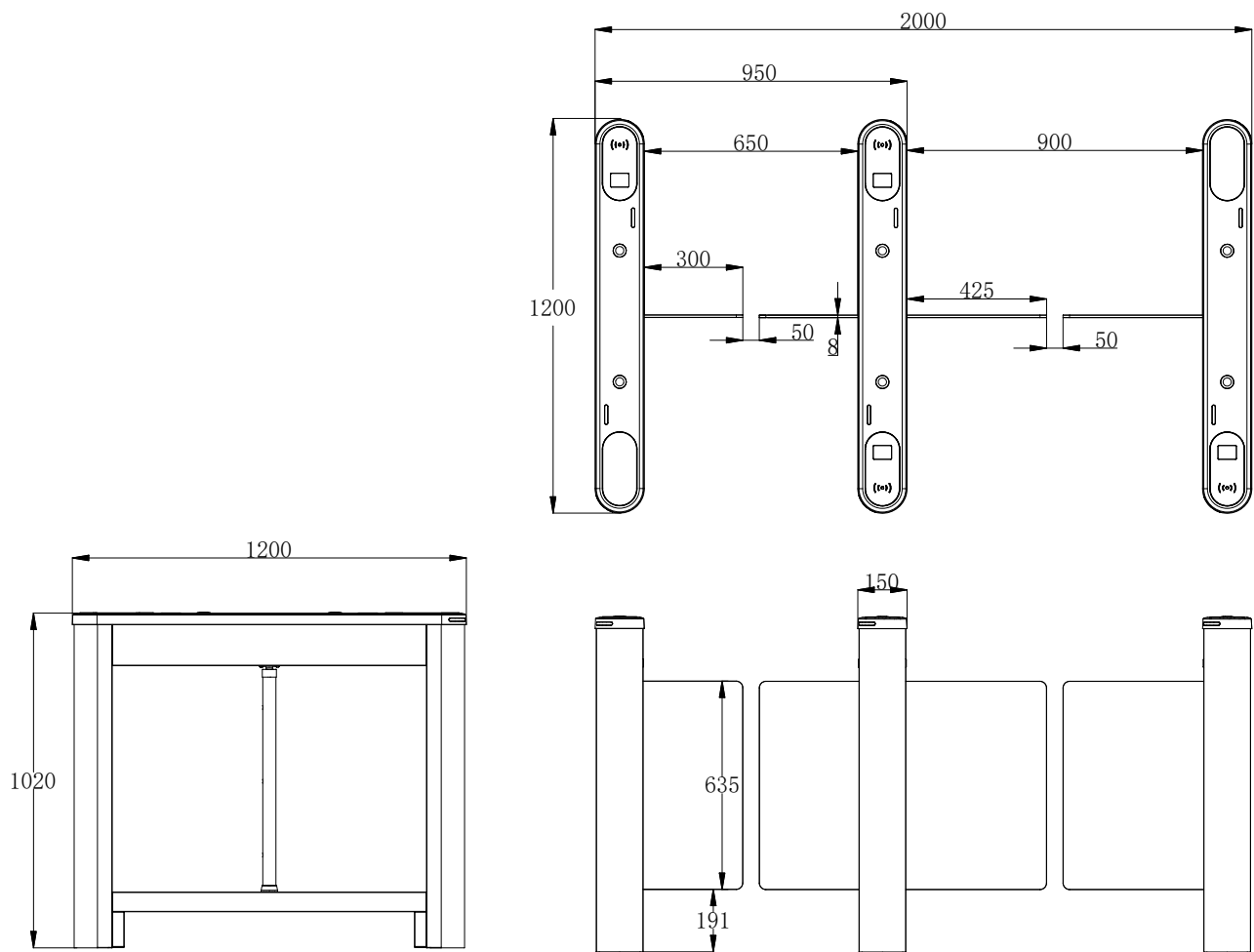
Saturn-S1000



Saturn-S1200



Dimensions (mm)



Application Scenarios



Corporate Premise



Conference Venue



Hotel



Transport Terminal



ZKTECO CO.,LTD.

www.zkteco.com

E-mail: sales@zkteco.com



Copyright © 2024 ZKTECO CO, LTD. All rights reserved.

V 1.8 12/5/2024