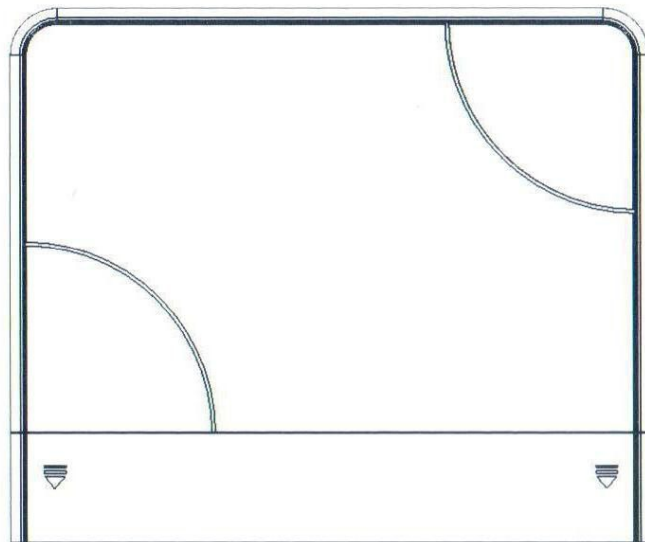


# Waterproof PoE Switch

## User Manual



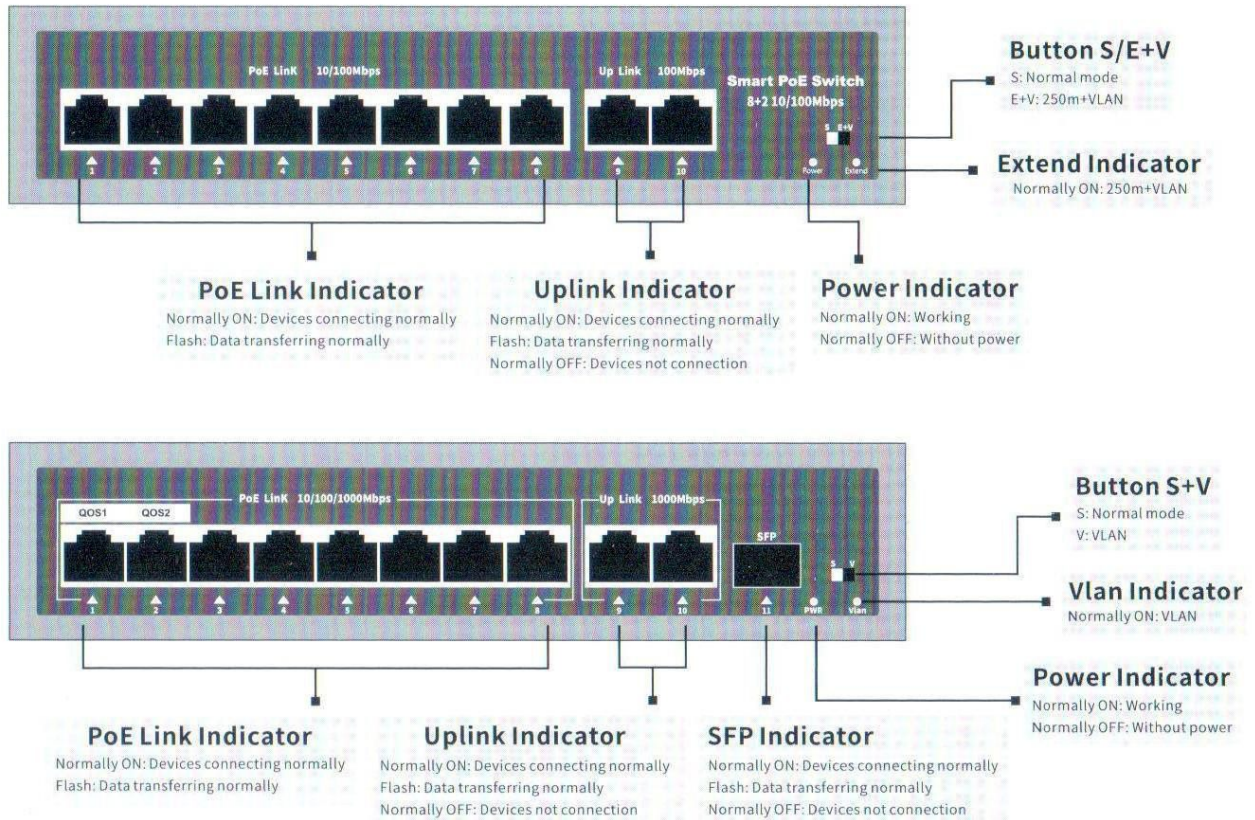
1.0Beta

## Chapter 1: Product Introduction

### 1.1 Product Introduction

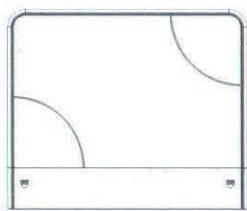
This series of products is the latest outdoor waterproof PoE switch launched by our company. The switch adopts a professional outdoor housing design, which can easily cope with rain, snow, high temperature and other severe weather effects, and meets the needs of various scenarios such as indoors, outdoors, wall mounting and pole-holding.

### 1.2 The definition of interface and illustration of indicator

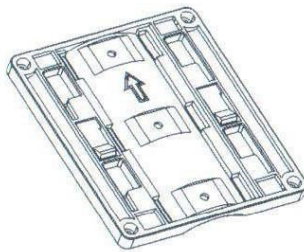


## Chapter 2: Production Installation

### 2.1 Packing List



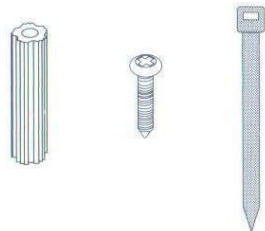
Waterproof PoE Switch



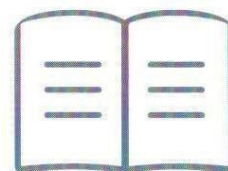
Installation mount



Label of screw location

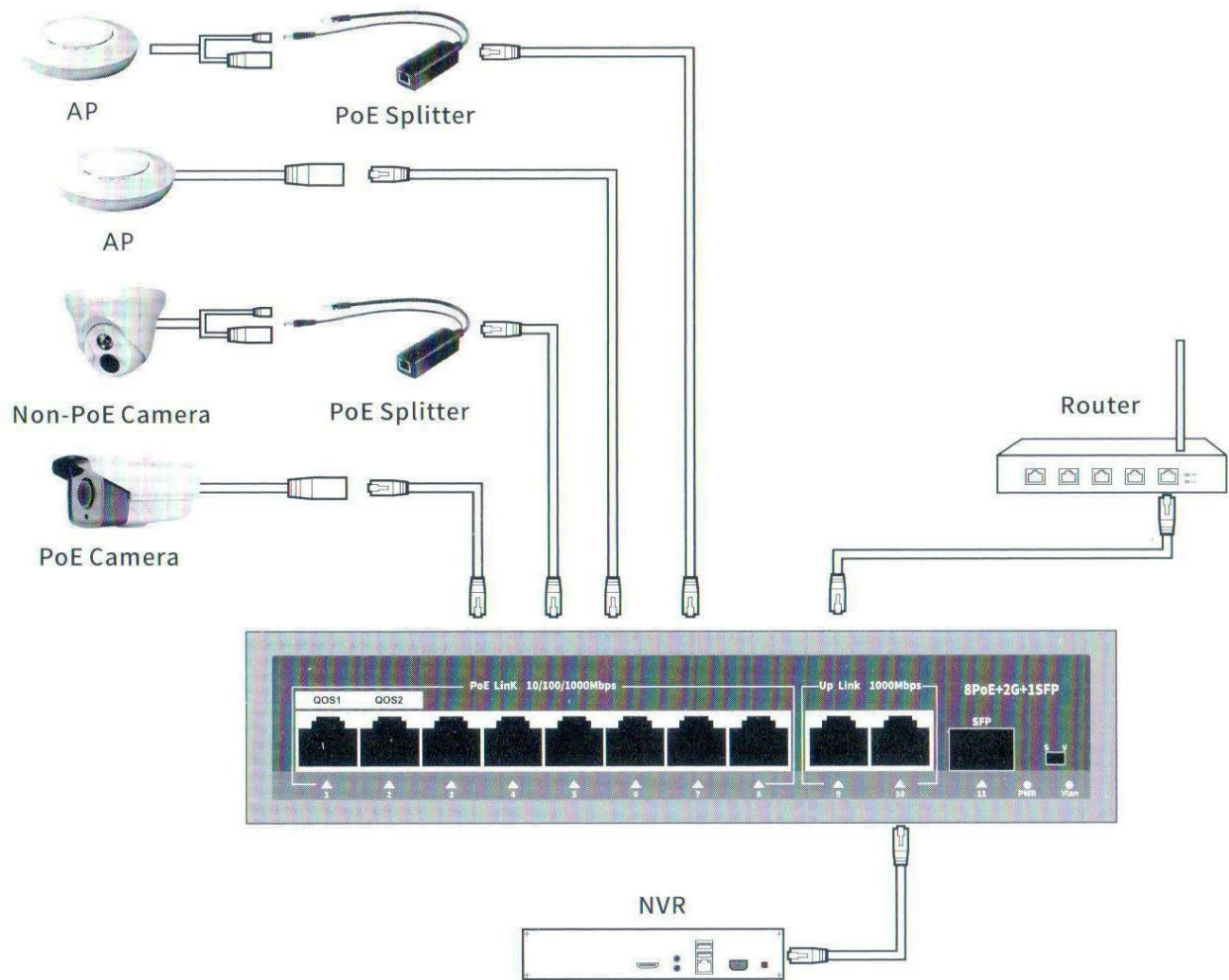


Plastic expansion tube\*4  
Pan head self-tapping screws\*4  
cable tie\*2



User manual

## 2.2 Devices Connection Schematic Diagram



## 2.3 Precautions for installation



**Note:** Please obey the precautions below to avoid product damaged and personal injury caused by improper using.

- Please keep the power off during the whole installation.
- Please provide the power which is consistent with the power marked because the switch only works well under the correct power.
- Please confirm that it won't cause the overload on the circuit and the power before energize the switch, to avoid affecting the normal working on the switch, even unnecessary damage.
- Please don't open the shell of the switch when it is working, to avoid the danger of the electric shock; don't open it yourself even if it is nor energized.

In order to guarantee the long-life stable working of the switch, please keep the stable temperature and humidity of the environments.

It will cause the leakage of insulation materials, deformation even metal shedding to corrosion when under the too high or too low humidity.

It will accelerate the aging process of insulation materials, seriously affect the service life of the device when the temperature is too high.

The temperature and humidity for normal working and storage:

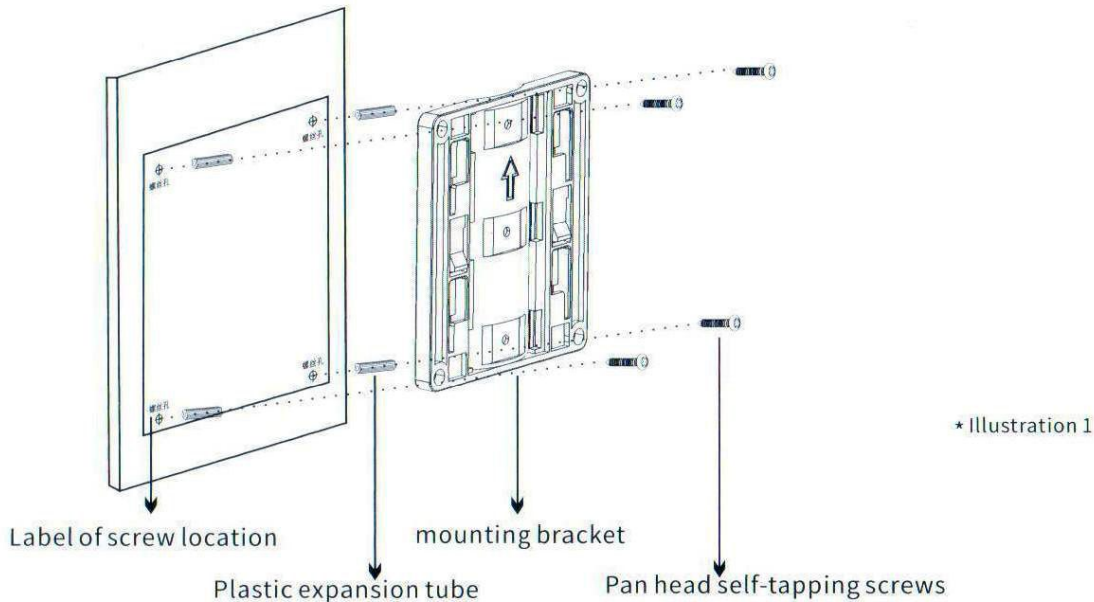
Environments	Temperature	Relative humidity
Working environment	-10℃--55℃	10%--90%RH non condensing
Storage environment	-40℃--70℃	5%--90%RH non condensing

## 2.4 Devices Installation

It supports two ways of installation: wall mounting and pole holding, needs to be put upright, and is forbidden to put the hole upwards.

### 2.4.1 Wall mounting

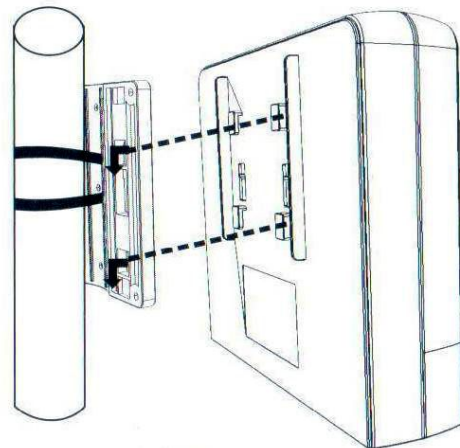
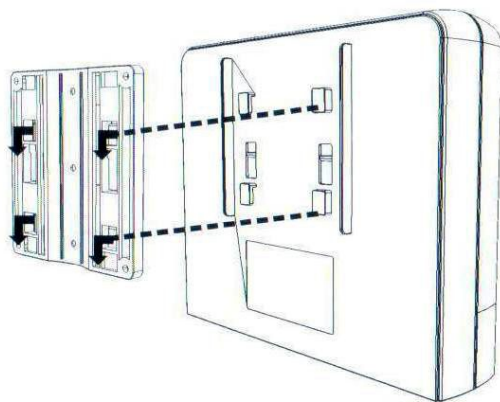
1. Install the bracket: paste the label of screw location on the wall, Firstly, drill out four bases with a diameter of 6mm at the marked position and then insert the plastic expansion tube, and fix the mounting bracket on the wall with self-tapping screws(As Illustration 1 shows)



**Note:** The mounting bracket should be installed with the arrow pointing up.

### 2. Fix the device on the mounting bracket:

Align the device with the middle of the mounting bracket, slide from top to bottom, and embed the device into the mounting bracket. (As illustration 2 shows)



### 2.4.2 Pole-holding

Use a cable tie to pass through the wire hole on the back of the mounting bracket, fix the mounting bracket on the pole and tighten the cable tie, and embed the device on the mounting bracket. (As illustration 3 shows)